

Insulators MSG



MSG 1
MSG 1,5
Insulators for large pipe
diameters upwards of
350 mm

In brief...

- MSG insulators are suitable for pipe diameters over 350 mm. Only a few segments are needed to make up a ring.
- Size MSG 1,5 reduces the number of segments required which means **less screwdriving work**.
- The connecting skids project less than the runner skids and carry no load, thus increasing performance and durability (higher load-bearing capacity).
- Generous dimensions and two runner skids per segment give MSG insulators **top stability**.

Segment sizes

MSG 1

arc length : 314 mm
width : 170 mm
2 runner skids
2 connecting skids.

The segments are connected with 3 stainless steel bolts per join.
To find out the required number of segments for a particular pipe diameter use the table two pages on.



MSG 1.5

arc length : 469 mm
width : 170 mm
2 runner skids
2 connecting skids.

The segments are connected with 3 stainless steel bolts per join.
To find out the required number of segments for a particular pipe diameter use the table two pages on.



Skid heights



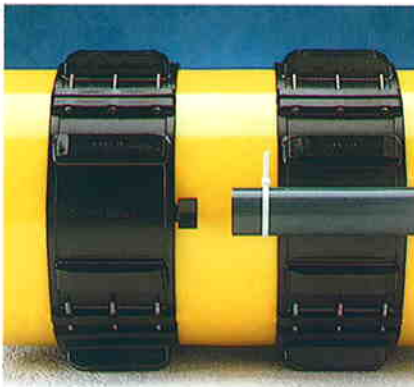
above: MSG 1 in 25, 67 and 125 mm skid heights.

MSG 1 and MSG 1,5 can be ordered with the following skid heights :

20 mm, 25 mm, 38 mm, 42 mm, 50 mm, 67 mm, 75 mm, 90 mm, 110 mm, 125 mm.

Special skid height requirements can be catered for if the order exceeds 1000 segments.

Cable protective pipe



All segments are available with an injection-moulded support for cable pipe.

The cable pipe is fastened on by means of quick-lock-binders or steel tightening clamps.

Assembly

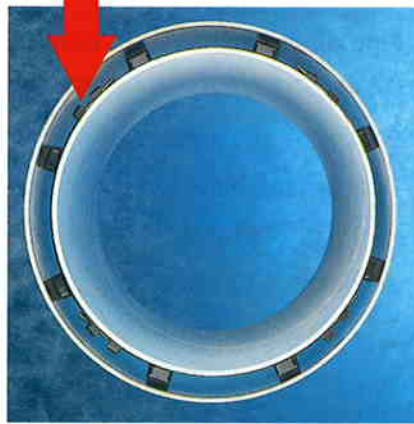


Segment sizes MSG 1 and MSG 1,5 can be combined at will.

Assembled insulator ring consisting of 4 MSG 1 segments (to ND 400).

Connecting skids recessed to grip square nuts.

Increased performance



Thanks to low connecting skids which have no carrying function, MSG insulators have a higher load-bearing capacity.

Short assembly times

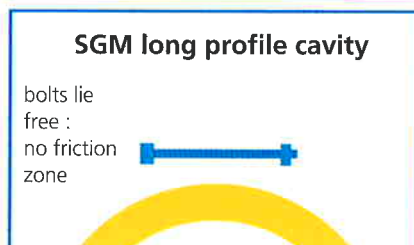
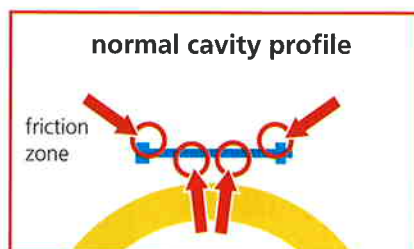


The connection of the segments occurs by means of square **stainless steel** bolts (A2). The bolts' heads have a larger diameter than other types of bolts in order to provide a bigger contact surface.

Because of their having a greater arc length, the number of segments required per ring decreases : **the assembly time is considerably shortened.**

The connecting skid's borehole apertures are recessed to take square nuts – no need to clamp the nuts when tightening the bolts.

Special profile borehole cavities ensure – even in the case of small diameter segments – that the bolt lies free and does not oppress the segment body.



Material

- MSG insulators are made from highest quality original low pressure polyethylene (ND-PE, no reconstitutes). This special polyethylene has the following technical features :
- high stress cracking resistance (18 h according to ATM D 1693)
 - high impact strength (15 kJ/m² according to ISO 179/2C)
 - very good compressive tenacity of ca.10 N/mm²
 - resistance to a constant temperature of 90°C and to short-term heating up to 110°C
 - outstanding dielectric strength (70-80 kmm, DIN VDE 0303)
 - good sliding properties
- MSG insulators are made of black polyethylene and are ca. 15 times more UV resistant than insulators made of white polyethylene.

Please note : on no account should cleaning agents or soap be used to lubricate insertion procedures ! Cleaning liquids contain substances that can cause tension-tears in PE. – with a possible consequence of a broken insulator and damage to the PE pipe coating.

Table of diameters

Pipe diameter	number and type of segments
350 mm - 399 mm	2 segments MSG 1 + 1 segment MSG 1,5
400 mm - 440 mm	4 segments MSG 1
449 mm - 491 mm	3 segments MSG 1 + 1 segment MSG 1,5
499 mm - 549 mm	2 segments MSG 1 + 2 segments MSG1,5
548 mm - 590 mm	1 segment MSG 1 + 3 segments MSG 1,5
598 mm - 640 mm	4 segments MSG 1,5
648 mm - 698 mm	2 segments MSG 1 + 3 segments MSG 1,5
697 mm - 749 mm	1 segment MSG 1 + 4 segments MSG 1,5
750 mm - 799 mm	5 segments MSG 1,5
797 mm - 849 mm	2 segments MSG 1 + 4 segments MSG 1,5
850 mm - 899 mm	1 segment MSG 1 + 5 segments MSG 1,5
896 mm - 949 mm	6 segments MSG 1,5
950 mm - 999 mm	2 segments MSG 1 + 5 segments MSG 1,5
1000 mm - 1049 mm	1 segment MSG 1 + 6 segments MSG 1,5
1050 mm - 1099 mm	7 segments MSG 1,5
1100 mm - 1149 mm	2 segments MSG 1 + 6 segments MSG 1,5
1150 mm - 1199 mm	1 segment MSG 1 + 7 segments MSG 1,5
1200 mm - 1249 mm	8 segments MSG 1,5
1250 mm - 1299 mm	2 segments MSG 1 + 7 segments MSG 1,5
1300 mm - 1349 mm	1 segment MSG 1 + 8 segments MSG 1,5
1350 mm - 1399 mm	9 segments MSG 1,5
1400 mm - 1499 mm	2 segments MSG 1 + 8 segments MSG 1,5
1500 mm - 1549 mm	10 segments MSG 1,5
1550 mm - 1600 mm	2 segments MSG 1 + 9 segments MSG 1,5

large sizes on request